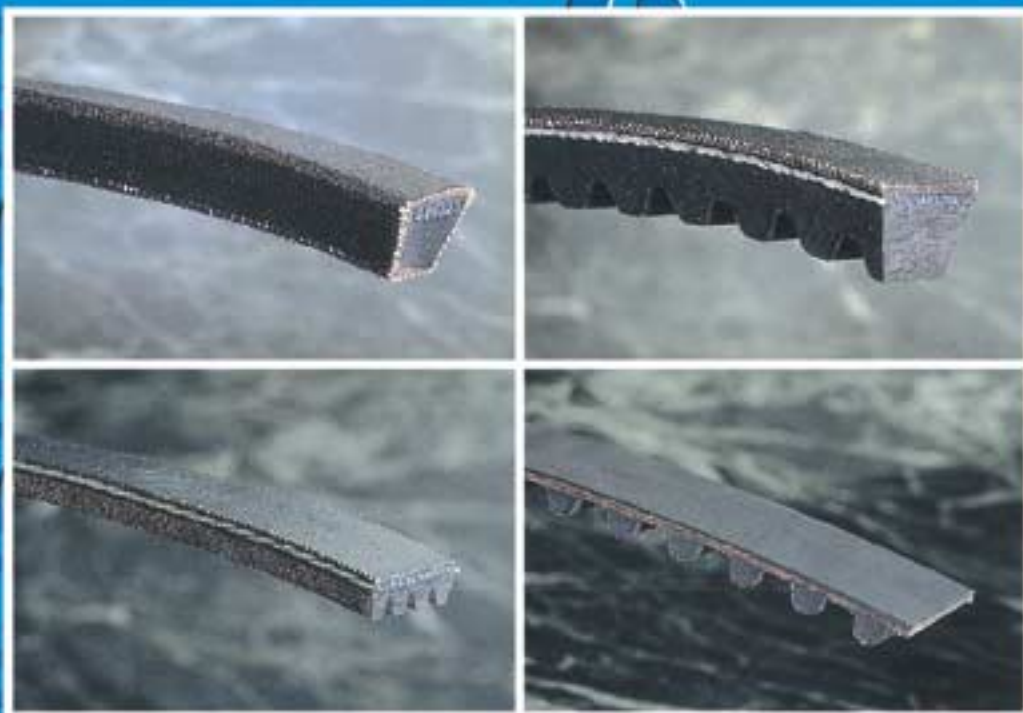
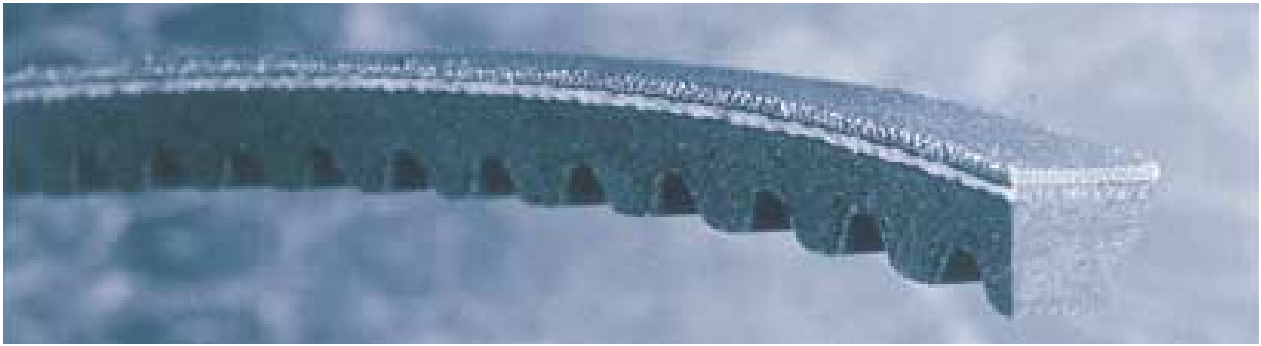


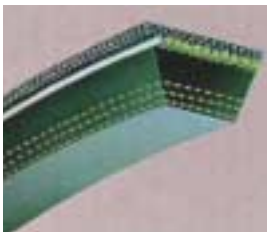
**ROULUNDS KOREA
AUTOMOTIVE BELT
PROGRAMME**



ROULUNDS AUTOMOTIVE V-BELTS



REC : Raw Edeg Cogged



REL : Raw Edeg Laminated



REP : Raw Edeg plain

BELT NUMBERING SYSTEM

The numbering system for V-belts consists of a code indicating the top width and the outer length of the belt.

- 1) Top width
- 2) Outer length

Example : AVX13 × 1350

AVX13 Top width in mm
1350 Effective length in mm(Le)

The first digit of the part number is a code for the top width in mm.

The system consists of the following codes:

AVX10/9.5
AVX13/12.5
AVX17
AVX22

SECTION PROGRAMME

Section	Top width [mm]	Height [mm]	Length range [mm]
AVX10/9.5	10.3	8	500-2800
AVX13/12.5	13	9	500-3000
AVX17	17	11	500-3000
AVX22	22.5	14	500-3000

ROULUNDS AUTOMOTIVE POLY V-BELTS



BELT NUMBERING SYSTEM

The numbering system for V-belts consists of an indication of the number of the ribs, profile type and the effective length (Le) in mm.

- 1) Number of ribs
- 2) Profile type
- 3) Effective length in mm

Example : 4PK 990

- 4 Number of ribs
- PK Profile type
- 990 Effective length in mm

There are two different profile types for automotive applications:

- PK One-side Poly V-profile
- DK Double-sided Poly V-profile

SECTION PROGRAMME

Section	Rib pitch [mm]	Height [mm]	Length range [mm]
PK	3.56	5.2	500-2900

ROULUNDS AUTOMOTIVE POLY V-BELTS

Effective length [mm]												
Section 3PK ~ 10PK												
485	700	837	926	1054	1183	1350	1496	1665	1835	2035	2265	2505
495	705	838	930	1055	1185	1352	1500	1670	1838	2040	2270	2510
500	706	840	935	1060	1187	1355	1505	1675	1840	2045	2275	2515
508	709	841	937	1062	1188	1360	1510	1680	1842	2050	2280	2520
510	710	844	938	1063	1190	1363	1511	1685	1845	2055	2285	2523
515	712	845	940	1065	1195	1365	1513	1687	1850	2065	2286	2525
535	713	849	941	1068	1200	1370	1515	1688	1852	2070	2288	2535
540	715	850	942	1070	1205	1375	1519	1689	1855	2075	2290	2540
545	719	853	945	1072	1208	1380	1520	1690	1860	2078	2300	2550
550	720	855	946	1075	1209	1381	1525	1692	1863	2080	2310	2553
555	725	856	950	1076	1210	1385	1530	1693	1865	2085	2314	2554
560	730	858	954	1079	1213	1387	1535	1695	1870	2090	2315	2555
563	735	860	955	1080	1215	1388	1538	1700	1873	2095	2317	2560
570	736	862	956	1083	1218	1390	1540	1705	1875	2100	2325	2565
575	737	863	960	1084	1220	1393	1545	1710	1880	2110	2330	2570
580	738	865	962	1085	1225	1395	1550	1713	1885	2119	2335	2578
585	740	866	963	1088	1230	1397	1555	1715	1887	2120	2345	2580
587	742	869	965	1090	1235	1400	1560	1720	1888	2122	2348	2585
590	743	870	968	1092	1238	1405	1563	1725	1890	2125	2350	2590
595	745	872	970	1094	1240	1407	1564	1726	1895	2130	2358	2595
600	750	874	975	1095	1245	1410	1565	1730	1900	2135	2360	2600
603	755	875	980	1100	1250	1413	1570	1735	1904	2140	2370	2605
605	760	877	985	1104	1253	1415	1575	1738	1905	2145	2375	2620
610	762	878	986	1105	1254	1418	1580	1739	1910	2150	2385	2623
613	763	880	987	1107	1255	1420	1585	1740	1915	2155	2388	2625
615	765	881	988	1110	1260	1422	1588	1745	1920	2160	2390	2627
620	768	884	990	1113	1263	1425	1590	1750	1925	2170	2395	2630
625	770	885	995	1115	1265	1430	1592	1753	1930	2175	2400	2635
630	775	886	996	1120	1270	1435	1595	1755	1935	2180	2410	2650
635	778	887	998	1123	1275	1437	1600	1760	1938	2185	2411	2655
638	779	888	1000	1125	1280	1440	1603	1763	1940	2190	2413	2663
640	780	890	1002	1130	1283	1441	1605	1765	1945	2191	2415	2675
645	785	894	1005	1132	1285	1443	1610	1767	1950	2195	2419	2690
648	787	895	1008	1135	1288	1445	1613	1770	1952	2200	2420	2695
650	788	897	1010	1137	1290	1450	1615	1775	1955	2204	2425	2700
655	790	898	1013	1138	1293	1454	1620	1780	1956	2205	2430	2705
660	795	900	1015	1140	1295	1455	1623	1785	1960	2210	2435	2720
663	800	902	1016	1141	1300	1460	1625	1790	1965	2215	2438	2730
665	805	903	1020	1145	1305	1462	1630	1795	1970	2220	2440	2745
668	810	905	1023	1150	1310	1463	1633	1800	1975	2225	2445	2794
670	812	906	1025	1152	1316	1465	1635	1803	1980	2230	2450	2815
673	813	907	1028	1153	1320	1470	1638	1805	1990	2235	2455	2825
675	815	910	1030	1155	1322	1475	1640	1810	1995	2236	2457	2830
680	820	912	1035	1158	1325	1480	1642	1813	2000	2240	2460	2845
685	823	913	1036	1160	1330	1482	1645	1815	2005	2245	2465	2870
687	825	915	1038	1163	1332	1485	1650	1820	2010	2250	2470	2895
688	829	916	1040	1165	1335	1487	1655	1825	2015	2255	2475	
690	830	920	1045	1170	1338	1488	1658	1826	2017	2256	2485	
695	835	923	1050	1175	1340	1490	1660	1827	2020	2257	2490	
698	836	925	1052	1180	1345	1495	1663	1830	2030	2260	2500	

ROULUNDS AUTOMOTIVE TIMING BELTS



BELT NUMBERING SYSTEM

All timing belts are marked relevant product specifications.

The numbering system for timing belts consists of a code indicating the number of teeth, its profile and width of the belt.

- 1) Number of teeth
- 2) Profile type and pitch
- 3) Width of the belt in mm

Example : 91 ZA 19

91	No. of teeth
ZA	Profile type and pitch
19	19mm

ROULUNDS AUTOMOTIVE TIMING BELTS

SECTION HTA	SECTION HTB	SECTION R	SECTION S8M	SECTION Y	SECTION ZA	SECTION ZB	SECTION ZLB
65 HTA 12.7	59 HTB 22.0	70 R 16.0	65 S8M 12.7	100 Y 19.1	54 ZA 19.1	119 ZB 25.4	55 ZLB 12.7
99 HTA 19.1	70 HTB 16.0	101 R 24.0	65 S8M 19.1	100 Y 25.4	55 ZA 13.0	119 ZB 32.0	76 ZLB 19.1
99 HTA 25.4	83 HTB 19.1	102 R 19.1	110 S8M 22.0	107 Y 19.1	69 ZA 19.1	134 ZB 30.0	83 ZLB 19.1
100 HTA 20.0	89 HTB 19.1	101 R 25.4	112 S8M 17.0	107 Y 22.0	83 ZA 19.1	137 ZB 30.0	87 ZLB 34.0
101 HTA 16.0	89 HTB 24.0	103 R 19.1	112 S8M 19.1	117 Y 21.0	84 ZA 19.1	149 ZB 30.0	92 ZLB 19.1
101 HTA 20.0	89 HTB 25.4	104 R 17.0	112 S8M 25.4	121 Y 20.0	88 ZA 19.1		117 ZLB 25.4
101 HTA 25.4	91 HTB 19.1	106 R 19.1	137 S8M 25.4	121 Y 21.0	89 ZA 19.1		119 ZLB 32.0
103 HTA 22.0	92 HTB 22.0	106 R 22.0	137 S8M 27.0	121 Y 24.0	90 ZA 19.1		120 ZLB 19.1
107 HTA 19.1	93 HTB 25.4	106 R 24.0	137 S8M 29.0	123 Y 20.0	91 ZA 19.1		122 ZLB 19.1
107 HTA 22.0	95 HTB 19.1	108 R 24.0	146 S8M 20.0	123 Y 24.0	92 ZA 19.1		123 ZLB 19.1
107 HTA 25.4	95 HTB 25.4	109 R 19.1	147 S8M 19.1	124 Y 26.0	94 ZA 19.1		125 ZLB 19.1
12 HTA 22.0	97 HTB 19.1	109 R 22.0	147 S8M 25.4	127 Y 24.0	95 ZA 19.1		137 ZLB 30.0
121 HTA 29.0	97 HTB 25.4	111 R 17.0	148 S8M 20.0	127 Y 26.0	97 ZA 19.1		141 ZLB 30.0
135 HTA 25.4	99 HTB 25.4	111 R 19.1	148 S8M 25.4	137 Y 25.4	97 ZA 25.4		163 ZLB 25.4
137 HTA 19.1	99 HTB 26.0	111 R 20.0	148 S8M 20.0		98 ZA 17.0		
145 HTA 22.0	101 HTB 26.0	113 R 17.0	162 S8M 25.4		98 ZA 19.1		
154 HTA 22.0	101 HTB 30.0	113 R 19.1	162 S8M 30.0		102 ZA 19.1		
154 HTA 25.4	103 HTB 19.1	116 R 19.1	163 S8M 25.4		106 ZA 19.1		
156 HTA 29.0	103 HTB 24.0	124 R 19.1	163 S8M 27.0		109 ZA 19.1		
168 HTA 25.4	103 HTB 25.4	125 R 20.0	164 S8M 25.4		111 ZA 19.1		
207 HTA 32.0	104 HTB 24.0	127 R 25.4	164 S8M 30.0		111 ZA 25.4		
251 HTA 32.0	104 HTB 25.4	129 R 24.0	169 S8M 24.0		115 ZA 19.1		
257 HTA 32.0	105 HTB 22.0	129 R 31.0	173 S8M 29.0		116 ZA 19.1		
265 HTA 32.0	106 HTB 24.0	130 R 25.4	173 S8M 30.0		120 ZA 18.0		
	107 HTB 24.0	133 R 24.0	191 S8M 32.0		120 ZA 19.1		
	108 HTB 25.4	133 R 25.4	239 S8M 35.0		121 ZA 18.0		
	108 HTB 32.0	136 R 25.4			121 ZA 19.1		
	110 HTB 21.0	157 R 32.0			122 ZA 19.1		
	110 HTB 25.4	177 R 25.4			124 ZA 25.4		
	111 HTB 25.4				126 ZA 24.0		
	112 HTB 24.0				126 ZA 25.4		
	112 HTB 29.0				127 ZA 25.4		
	113 HTB 21.0				129 ZA 22.0		
	113 HTB 24.0				133 ZA 25.4		
	113 HTB 25.4				139 ZA 25.4		
	122 HTB 19.1						
	122 HTB 24.0						
	122 HTB 29.0						
	123 HTB 19.1						
	123 HTB 24.0						
	123 HTB 29.0						
	124 HTB 24.0						
	124 HTB 26.0						
	124 HTB 29.0						
	126 HTB 24.0						
	126 HTB 26.0						
	127 HTB 24.0						
	127 HTB 25.4						
	129 HTB 22.0						
	129 HTB 25.4						
	131 HTB 22.0						
	131 HTB 25.4						
	146 HTB 28.0						
	149 HTB 25.4						
	149 HTB 30.0						
	151 HTB 29.0						
	153 HTB 29.0						
	158 HTB 32.0						
	163 HTB 25.4						
	176 HTB 28.0						

ROULUNDS KOREA LIMITED

137-52, Yusan-Dong, Yangsan-City, Kyungnam, Korea

Tel : +82 55 380 8090~6

Fax : +82 55 380 8099

<http://www.roulunds.co.kr>